

A blue-tinted background image showing a 3D dental scan of a tooth. The tooth is covered in a dense point cloud, and a dental probe is visible at the top, suggesting a scanning process.

# 3D Systems Dental Solutions

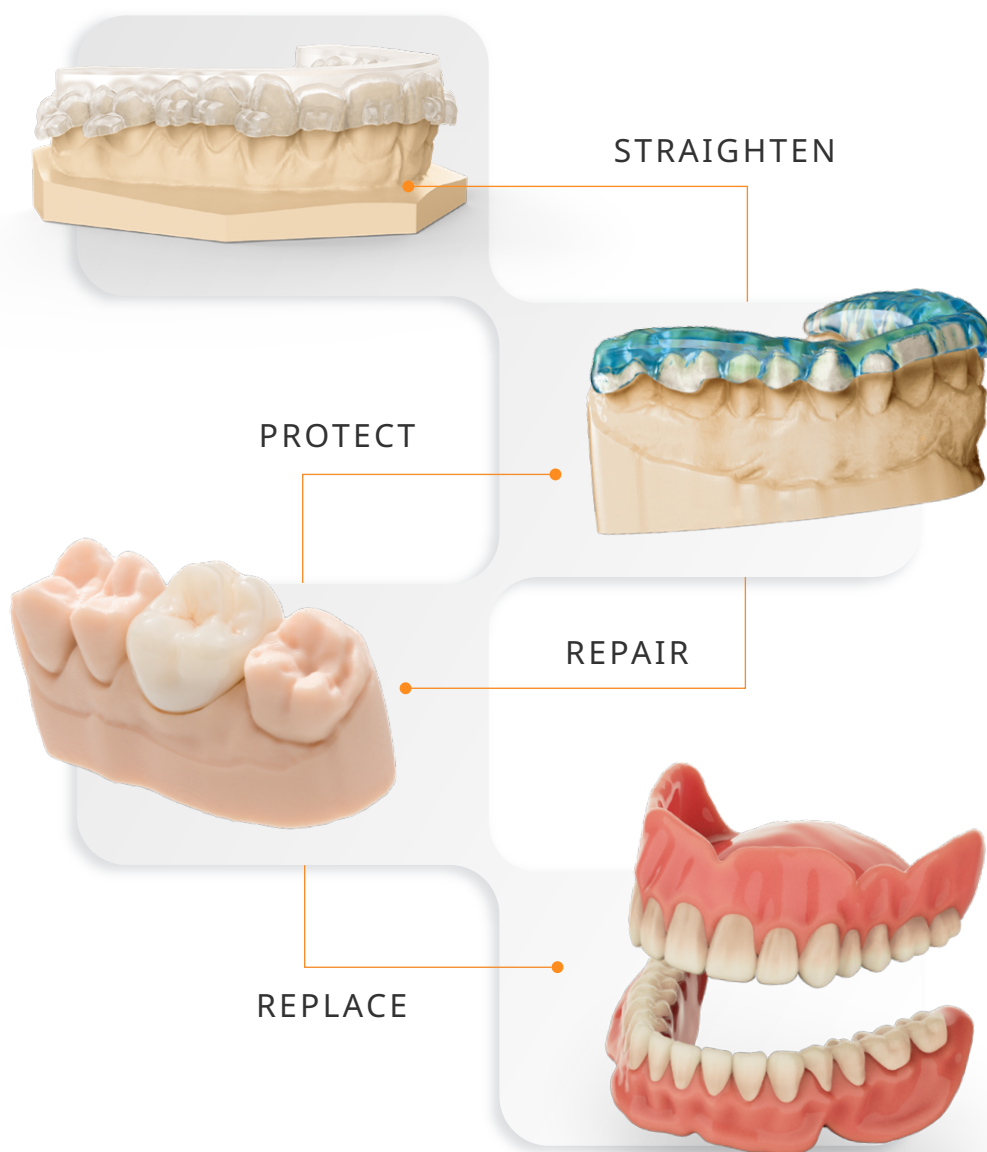
---

Integrated Solutions  
for Dental Applications

# Unlock the Power of 3D Printing

**With 3D Systems Digital Dentistry Solutions**, dental labs can efficiently straighten, protect, repair, and replace with high precision. 3D printing enables the production of custom prosthetics - such as crowns, bridges, and aligners - that provide a precise fit, enhanced durability, and cost-effective results.

Our innovations streamline workflows create trusted durability, and enable faster, more reliable solutions for diverse patient needs.



Trusted in **additive manufacturing** across multiple industries, 3D Systems' innovations build a strong foundation for your business' success.

## For Dental Labs and Clinics

---

Our validated workflows and materials improve production efficiency, reduce labor costs, and expand service offerings for dental labs and clinics, allowing businesses to scale and stay competitive.

## For Clinicians

---

Our advanced 3D printing solutions enable clinicians to provide customized, high-quality restorations faster, improving treatment workflows and patient satisfaction.

## For Patients

---

By leveraging industry-leading materials and digital workflows, we ensure better-fitting, longer-lasting, and more aesthetic dental solutions, ultimately enhancing patients' confidence and quality of life.



25+ years  
of dental  
innovation

---



Validated,  
integrated  
workflows

---



Global  
support from  
application  
experts

---



Materials that  
integrate with  
industry-leading  
3D printers



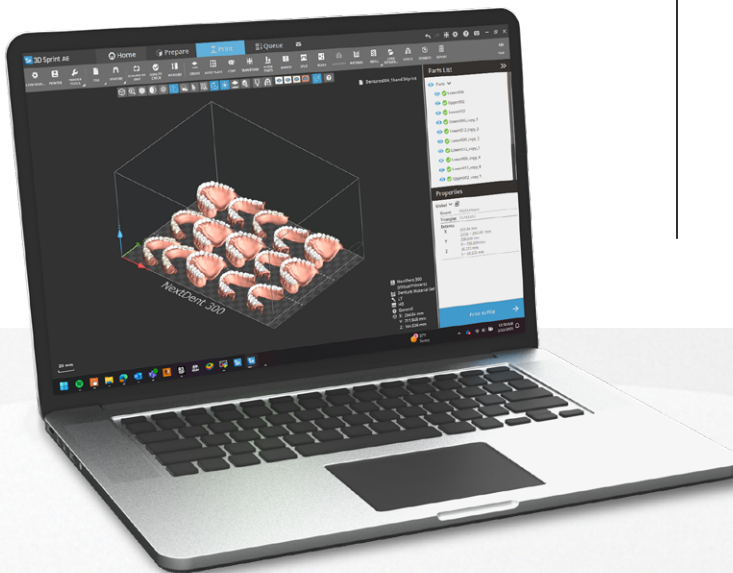


# Our Solutions start with our Software

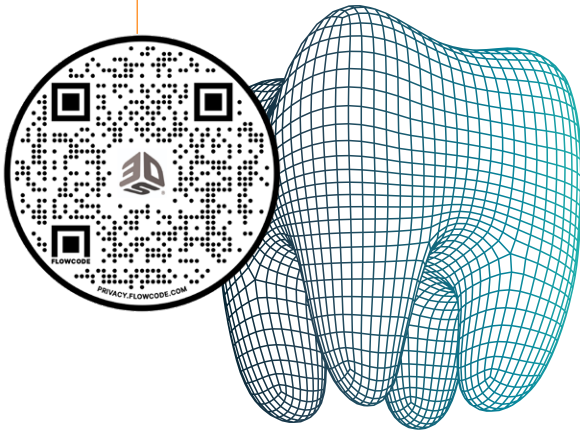


3D Systems' proprietary 3D Sprint® software streamlines preparation, optimization, and production management, providing efficiency and precision while reducing reliance on high-cost external software.

Whether designing orthodontic models, dental prosthetics, or surgical guides, our software enables seamless integration with dental workflows.



Learn more about  
**3D Sprint®**



# Industry-leading Materials Portfolio

With the largest portfolio in the industry, our materials are engineered for superior performance, patient comfort, and longevity.

Our materials integrate seamlessly with a wide range of industry-leading 3D printers, setting a new standard in digital dentistry.



## NextDent® Materials Portfolio Compatibility

Did you know NextDent® materials are validated on many competitor printers?



Download the  
**Compatibility Chart**



## NextDent 5100

High-speed dental solution addressing the broadest range of applications with NextDent 3D printing materials

<b>Applications</b>	Full range of dental applications
<b>Max Build Area (mm)</b>	125 x 70 x 196
<b>Price Point</b>	\$



## NextDent 300

Industry's first solution for multi-material, monolithic dentures

<b>Applications</b>	Monolithic dentures
<b>Max Build Area (mm)</b>	294 x 211 x 50
<b>Price Point</b>	\$\$



## DMP Flex 200

Professional and precise metal 3D printer with 500W laser source

<b>Applications</b>	RPD's, crowns, bridges, implant bars
<b>Max Build Area (mm)</b>	140 x 140 x 115
<b>Price Point</b>	\$\$\$

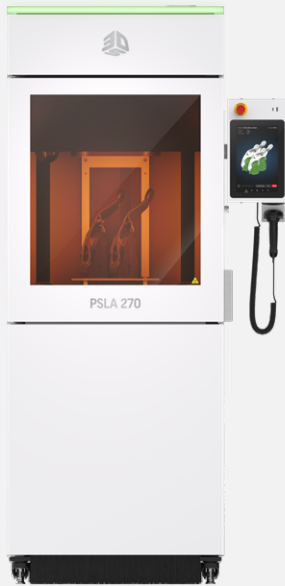




## NextDent LCD1

Small sized easy-to-use 3D printer

<b>Applications</b>	Full range of dental applications
<b>Max Build Area (mm)</b>	128 x 80 x 140
<b>Price Point</b>	\$



## PSLA 270

High-resolution printer that merges the speed and production grade material benefits of light projection technology with the repeatable, high-quality outcomes of SLA

<b>Applications</b>	Models for thermoformed aligners
<b>Max Build Area (mm)</b>	242 x 265 x 300
<b>Price Point</b>	\$\$



## SLA 750

High-speed, projector-based SLA solution designed for time-sensitive and high part volume production

<b>Applications</b>	Models for thermoformed aligners
<b>Max Build Area (mm)</b>	750 x 750 x 550
<b>Price Point</b>	\$\$\$

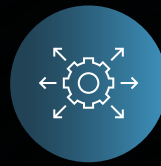
# Your success is our priority, our team is here to help.

Visit our website to discover all of our support resources

---



Customer  
Set-up Guides



Service  
Guides



Training  
Videos



Hardware, Software,  
and Materials Support

## Contact Us

**Dental Application Support**  
[dentalsupport@3dsystems.com](mailto:dentalsupport@3dsystems.com)

**Technical Support**  
[support@3dsystems.com](mailto:support@3dsystems.com)

**3D Systems Corporation**  
333 3D Systems Circle  
Rock Hill, SC 29730  
[www.3dsystems.com](http://www.3dsystems.com)

Warranty/Disclaimer: The performance characteristics of these products may vary according to product application, operating conditions or with end use. 3D Systems makes no warranties of any type, express or implied, including, but not limited to, the warranties of merchantability or fitness for a particular use.

© 2025 by 3D Systems, Inc. All rights reserved. Specifications subject to change without notice.